

City Council Meeting **PREFERRED CONCEPT PLAN**



Landscape Design Services / Ohlone Greenway

Albany, California

1 February 2016



Preferred Concept Plan AGENDA

1. Discuss Project History, Master Planning Ideas, and the Landscape Design Services, \$300,000 project budget
2. Review Site Conditions / *What we see*
3. Review the December 10th Workshop / *What we heard*
4. Review Concept Design Alternatives
5. Present the *Preferred Concept Plan*



Master Planning vs. Landscape Design Services

1. Our scope is not to prepare a Master Plan. Our charge is to focus on a Landscape Design Services and achieve a successful project solution within the \$300,000 budget—*however...*
2. We look ahead and—*Master Plan*—even on a small project
3. Keep the future in mind—while designing to the budget
 - Coordinates current project work with future planning
 - Allows community and city to explore range of options
 - Leads to a more efficient allocation of funds

SITE CONDITIONS / What We See



Albany South Gateway at Codornices Creek

What We See



Redwood Grove



What We See



Dartmouth Lawn

What We See



Dartmouth Circle

What We See



What We See



Landscape Berms Direct the Trail to Crosswalk

What We See



Seating Areas at Marin across from Library

What We See



Pedestrian Trail Paralleling Main Trail

What We See



Solano – Plaza across from Senior Services

What We See



San Gabriel – Open Lawn



What We See



Garfield Intersection

What We See



Apartment Service Area near Brighton



What We See



Brighton – Active School Zone



What We See

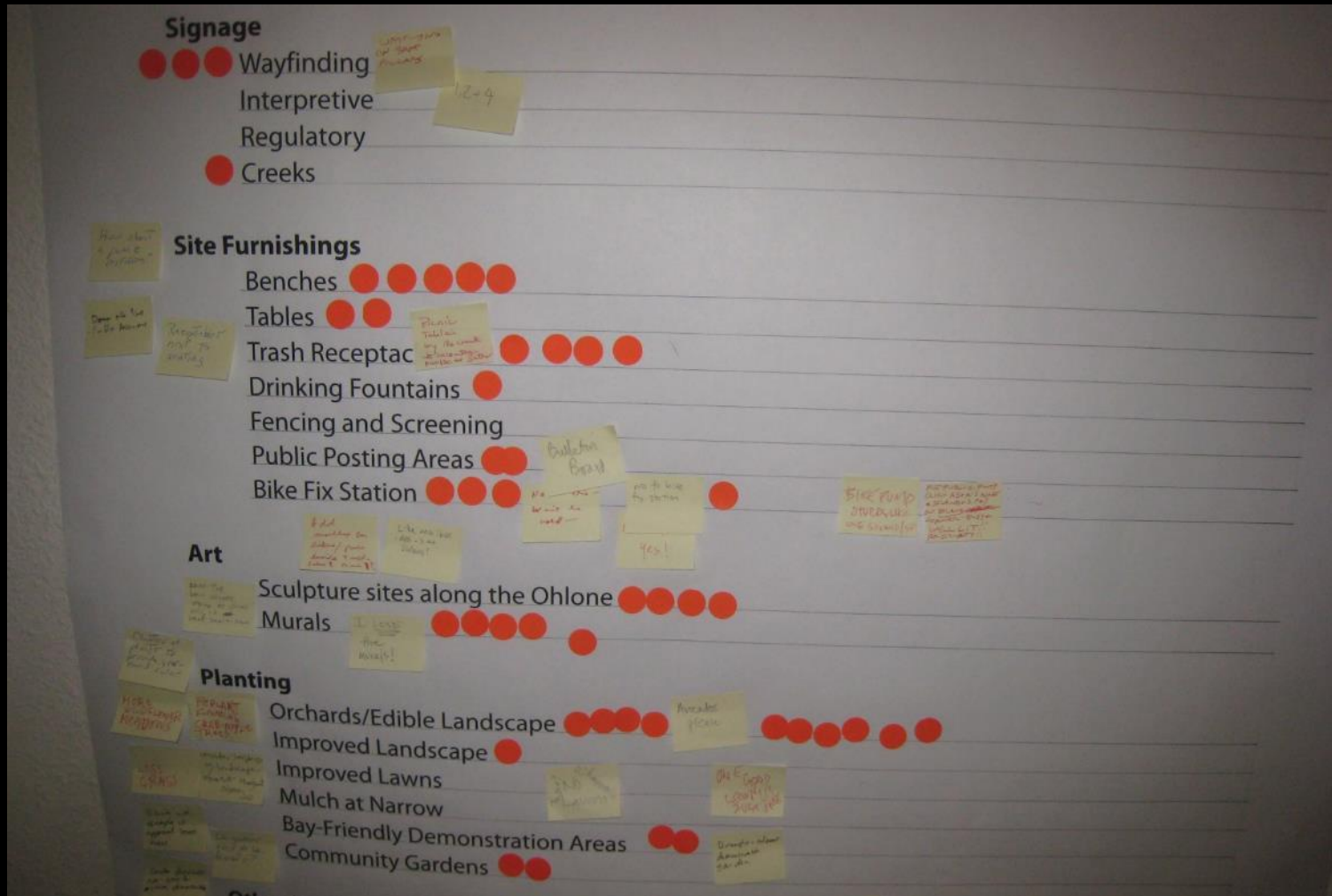


Albany North Gateway at Cerrito Creek

WORKSHOP DEC 10th / *What We Heard*



What We Heard



Approach + Site Elements / Vote Tally

What We Heard

1. Better Seating and More Trash Receptacles
2. Linear Par Course and/or Exercise Court
3. Bocce Court
4. Play Areas at Solano North and San Gabriel
5. Orchard – Develop on East Side
6. Bay Friendly Demonstration Gardens
7. Street Tree Demonstration / Labeling
8. Formalize Social Paths
9. Keep Activity Near Solano

Where do we go from here — ?

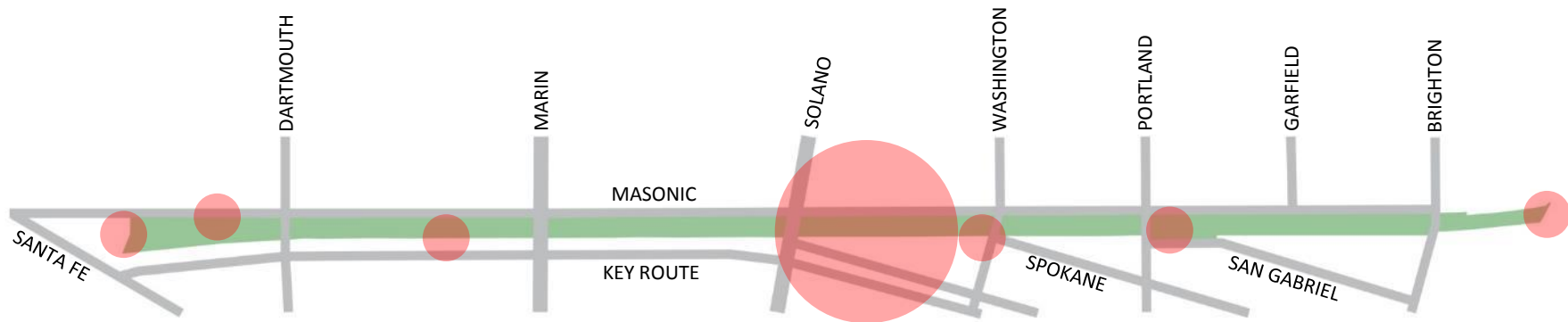
Conceptual Design Development

14 January Presentation to PRC—

Conceptual Design Approaches

1. Focus Amenities at Solano
2. Distribute Amenities along the Ohlone

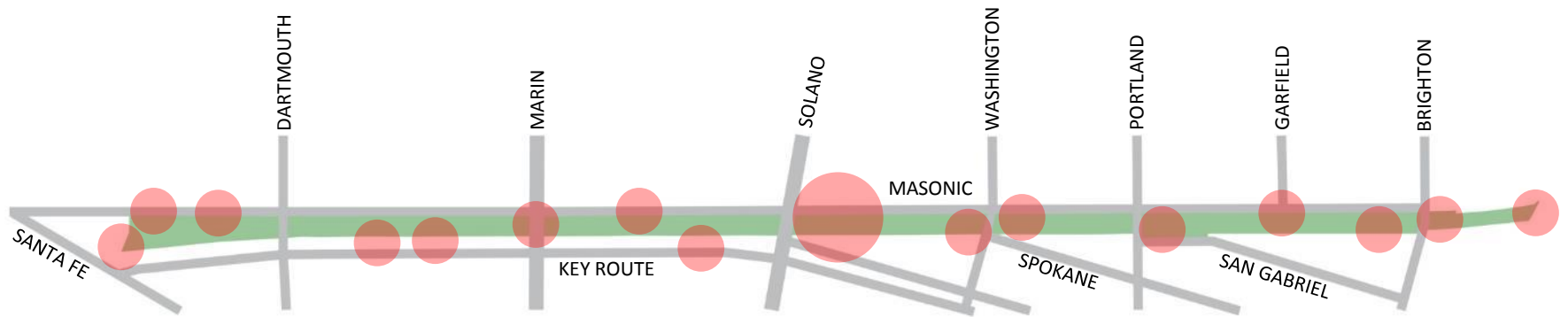




FOCUS AMENITIES

Why #1 Focus Amenities at Solano?

- Tie into Masonic Sidewalk Project
- Central Location / Commercial Street
- Proximity to Senior Services
- Site Changes have left area incomplete
- Create larger visual impact



DISTRIBUTE AMENITIES

Why #2 Distribute Amenities along Ohlone?

- All Greenway neighborhoods benefit
- More improvements outside of Solano
- Provides a variety of improvements

AMENITIES / What are they?

- Based on City/Community priorities
- Represent individual improvements along Greenway
- “Kit of Parts”—assigned to any Concept
- Number of Amenities will vary depending on Concept

GARFIELD
CROSSING

DEMO
GARDEN

REDWOOD
GROVE
SEATING

DARTMOUTH
CIRCLE

ORCHARD

APARTMENT
SCREENING

BOCCE

PAR COURSE

FORMALIZE
SOCIAL
PATHS

ART

SIGNAGE

PLAY AREAS

SEATING /
TRASH
RECEPTACLES

ADDITIONAL
PLANTING

GATEWAY

GARFIELD
CROSSING

DEMO
GARDEN

REDWOOD
GROVE
SEATING

DARTMOUTH
CIRCLE

ORCHARD

APARTMENT
SCREENING

BOCCE

PAR COURSE

FORMALIZE
SOCIAL
PATHS

ART

SIGNAGE

PLAY AREAS

SEATING /
TRASH
RECEPTACLES

ADDITIONAL
PLANTING

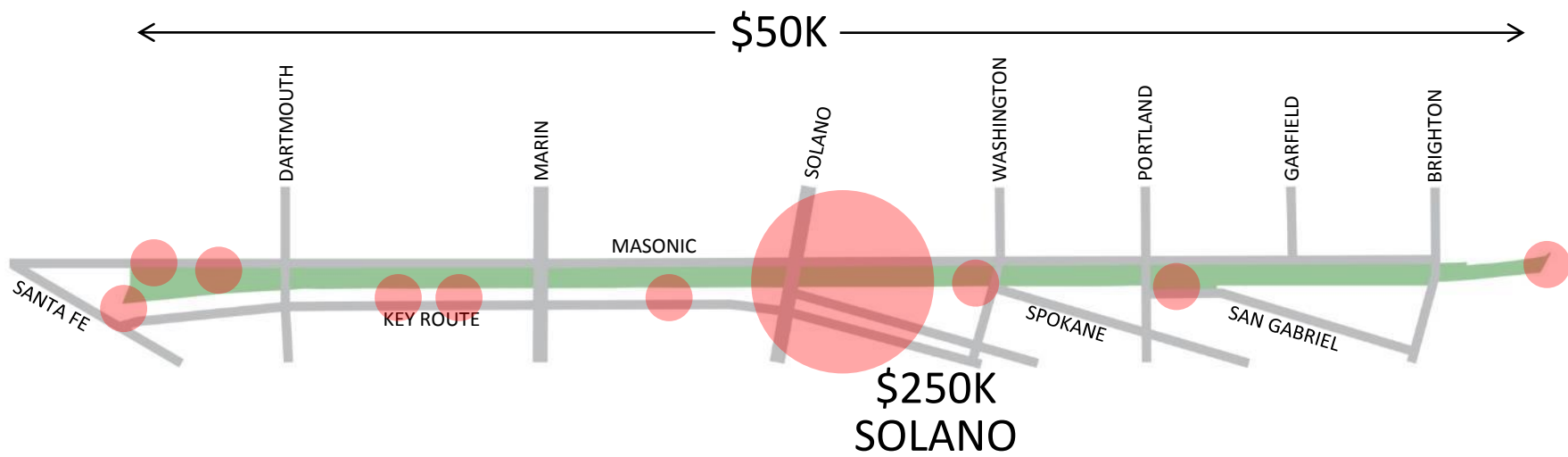
GATEWAY



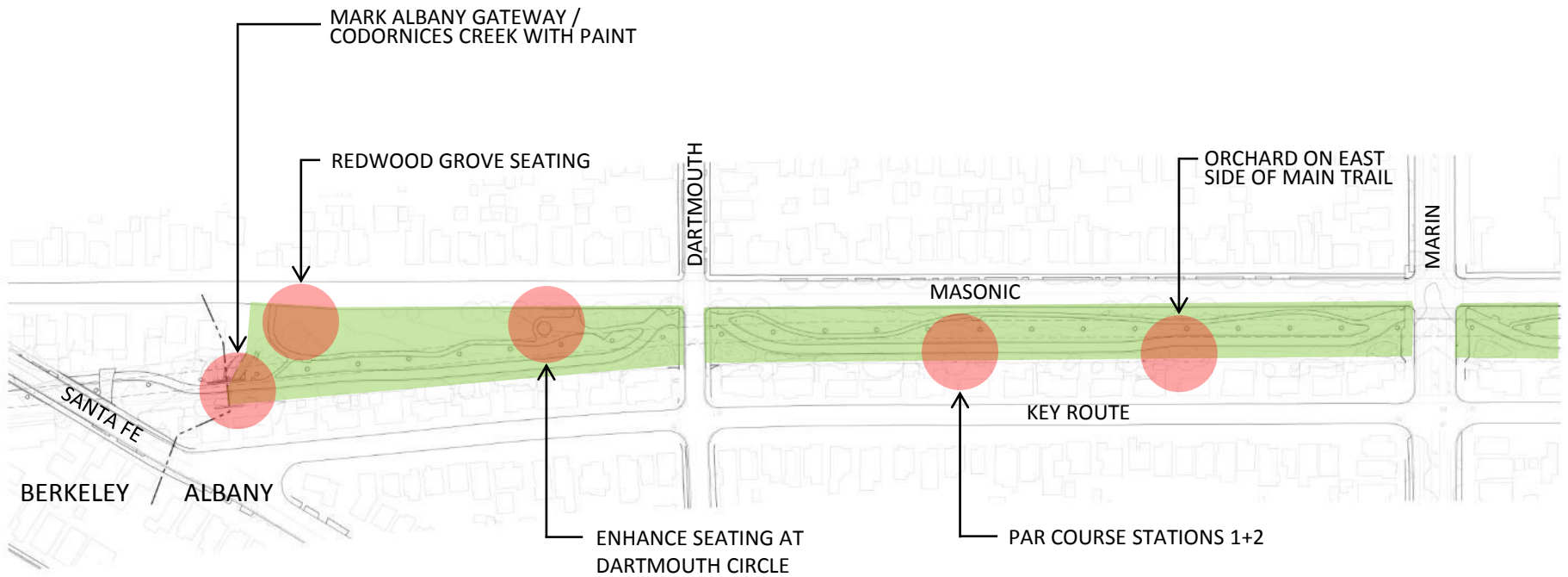
PREFERRED CONCEPT

Design

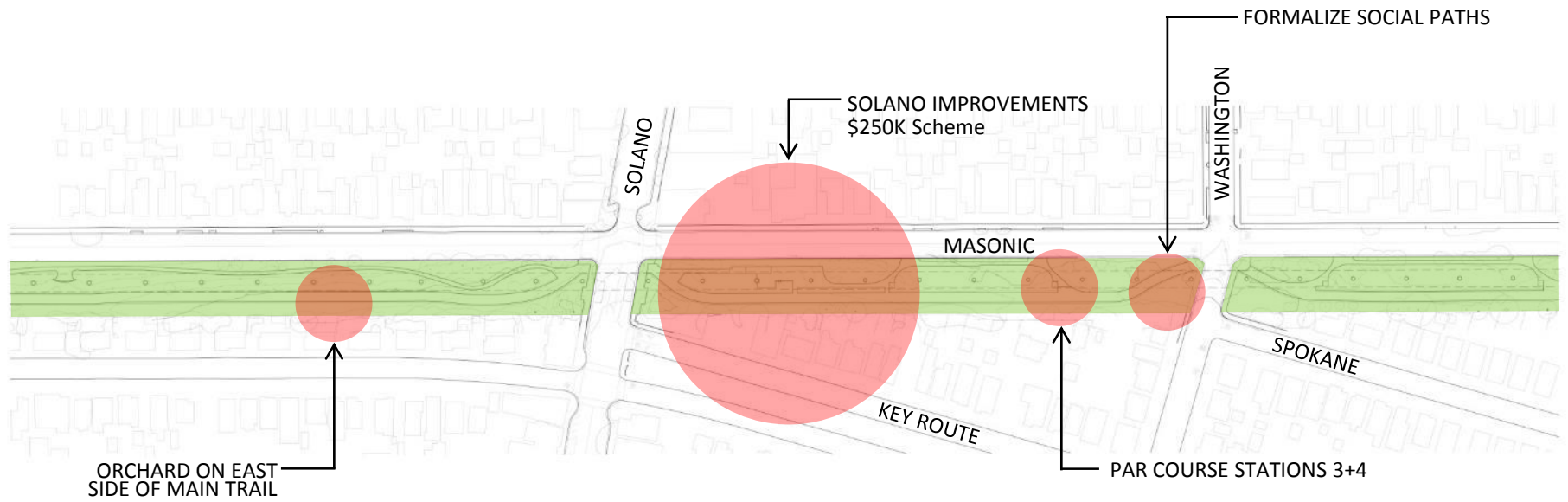




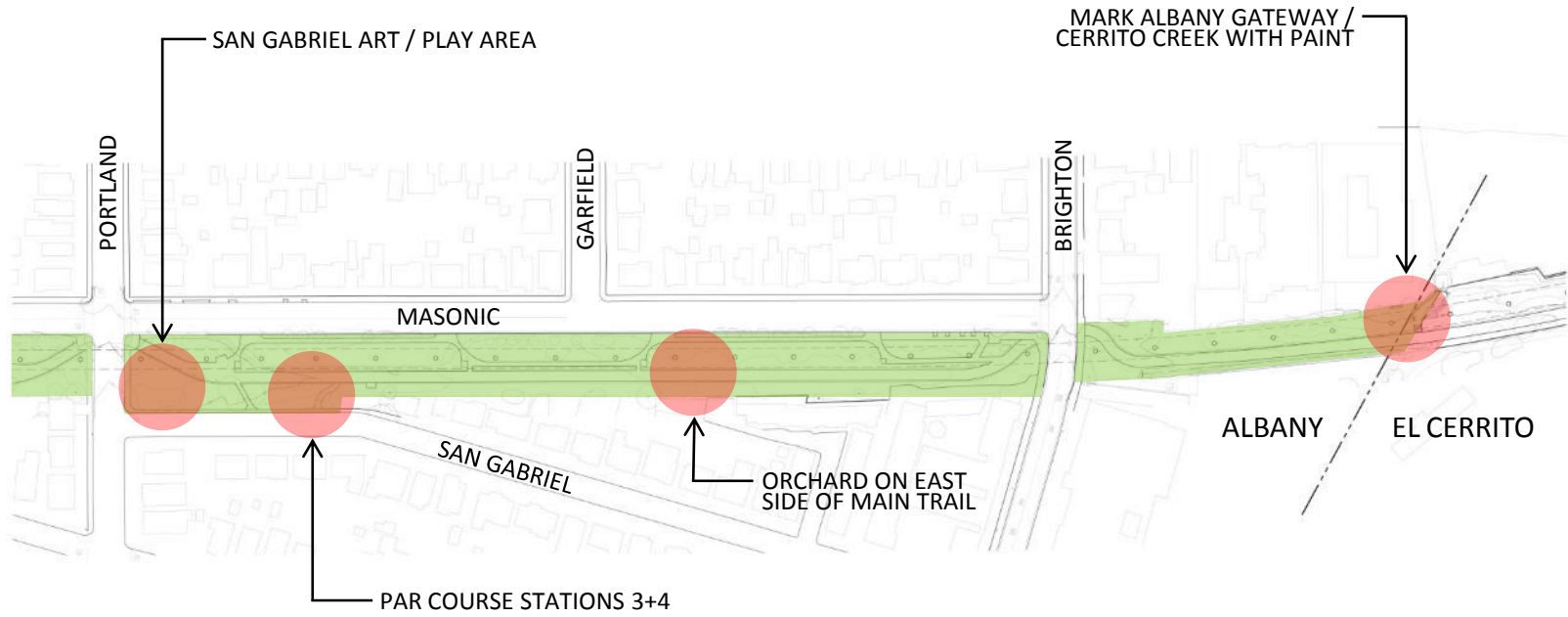
FOCUS AMENITIES



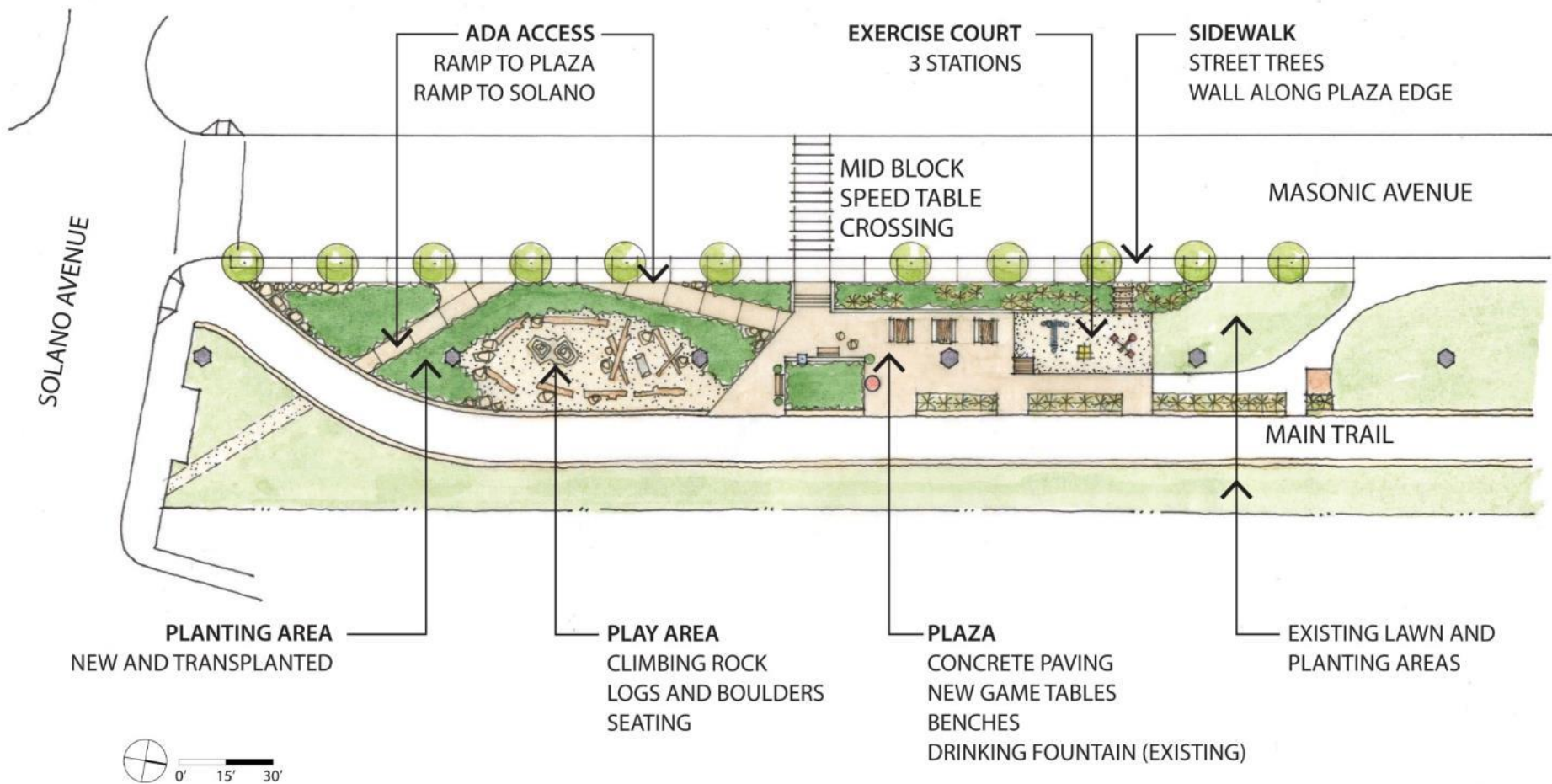
FOCUS AMENITIES - SOUTH



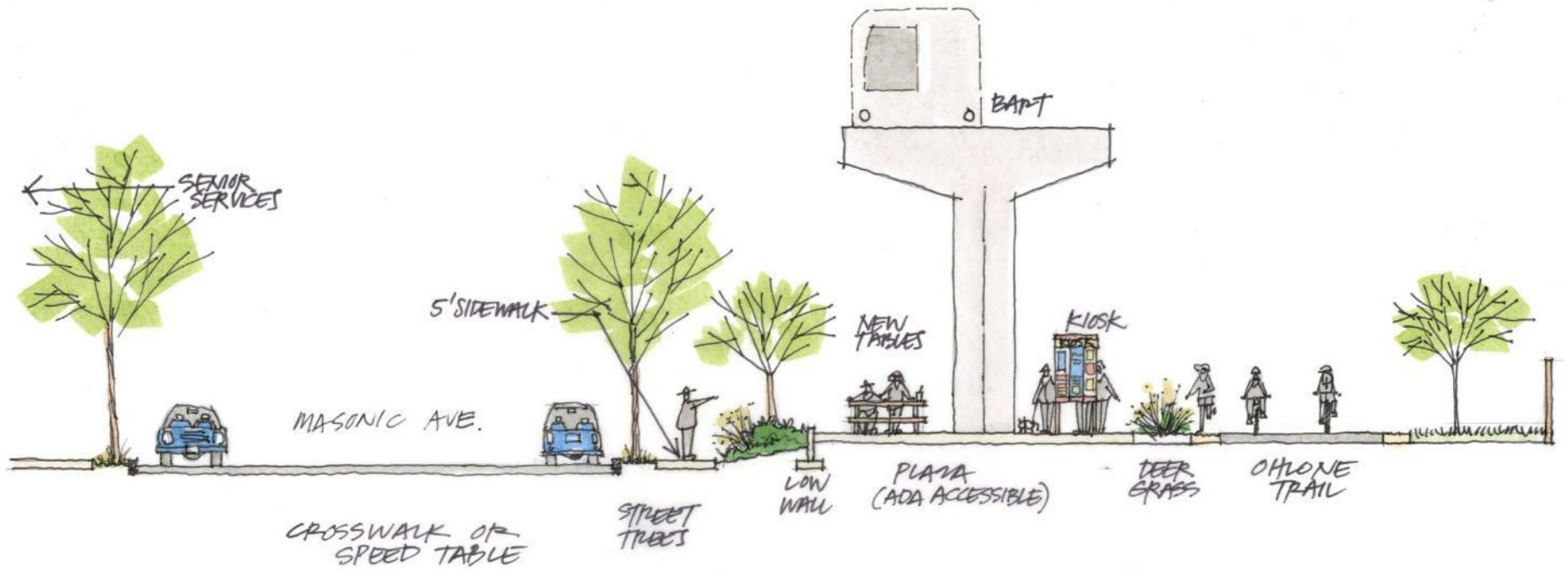
FOCUS AMENITIES - MIDDLE



FOCUS AMENITIES - NORTH



Solano Plan



Solano Section

PREFERRED CONCEPT

Amenities



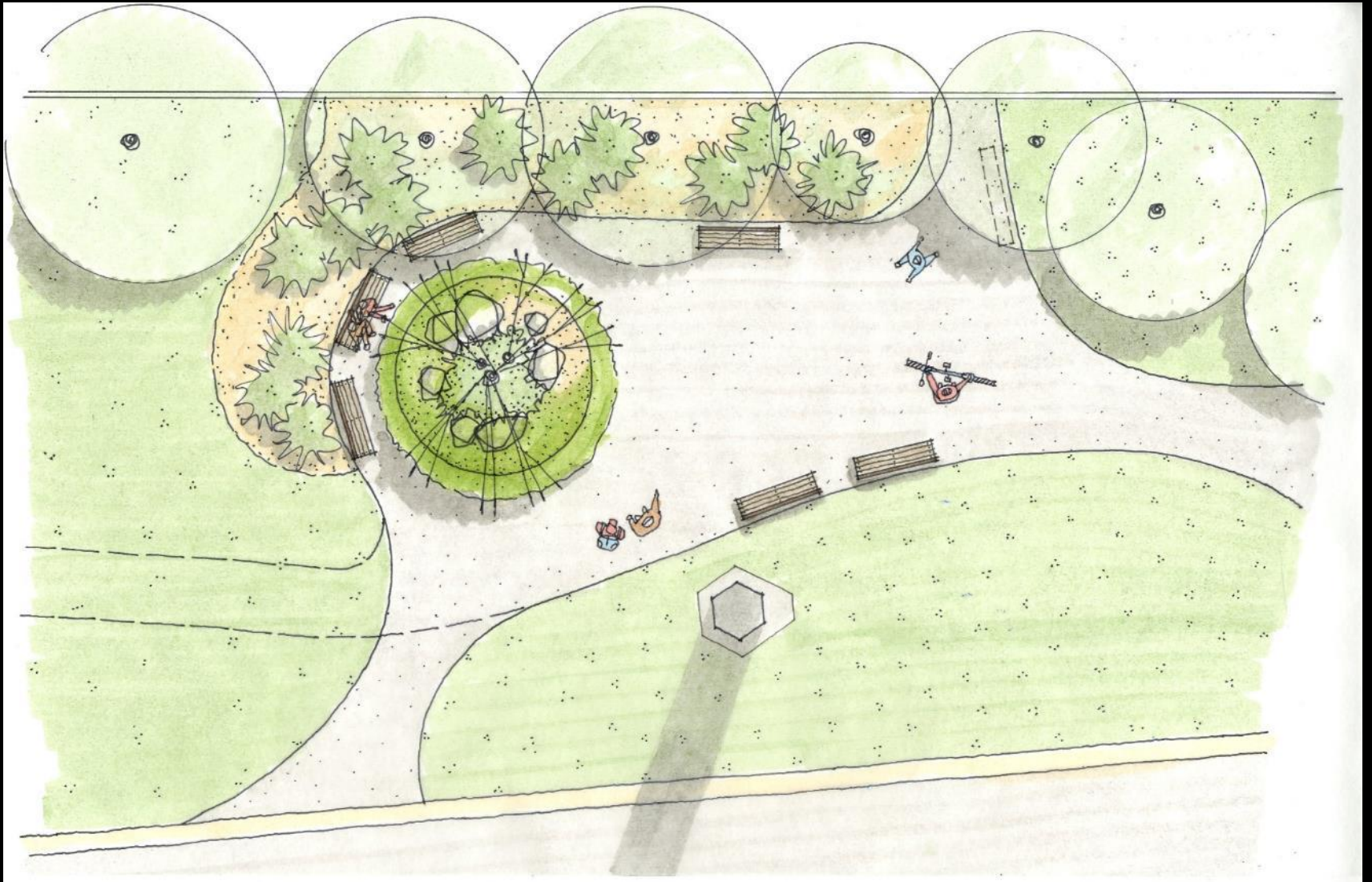


Mark Creeks on Trail with Paint:

- *Codornices*
- *Marin*



Redwood Seating / Play Area



Enhance Seating at Dartmouth Circle



Orchard



Par Course Along Trail



Formalize Social Paths



Art / Play Area at San Gabriel



Mark Creeks on Trail with Paint:

- *Cerrito*