

Albany Neck & Bulb Transition Improvement Plan

For the City of Albany

February 2015
Stakeholder Meetings



Project Goals

Identify improvements necessary to facilitate transfer of the Albany Neck & Bulb property from City of Albany to State Parks / EBRPD

- Public safety concerns related to construction debris
- Stabilization of shoreline and protection of landfill
- Resilience and adaptation to sea level rise
- Protection/enhancement of environmental resources
- Management of unauthorized uses
- Public access and recreational amenities



Team

City of Albany

Jeff Bond
Community Development
Director

Claire Griffing
Project Manager

WRT / Planning & Design

Stephen Hammond
Planner/Urban Designer
Principal-in-Charge

John Gibbs
Landscape Architect
Project Manager

John M. Francis
Planner/Urban Designer
Project Planner



ESA / Environmental

Bob Battalio, P.E.
Chief Engineer/Coastal Engineer

Elijah Davidian, AICP
Planning & Regulatory Specialist

Jorgen Blomberg, M.L.A
Restoration Designer

Louis White, P.E.
Civil/Coastal Engineer

SCA / Soils & Materials

Glenn Young
Principal Geologist

A3GEO / Geotechnical

Wayne Magnusen, P.E.
Principal Engineer

Dona Mann, G.E.
Principal Engineer

Purpose of Stakeholder Meetings

- Provide input on issues and opportunities related to key topics
- Scheduled Meeting Topic Areas
 - Habitat and Conservation
 - Access and Recreation
 - Dog Access
 - Art



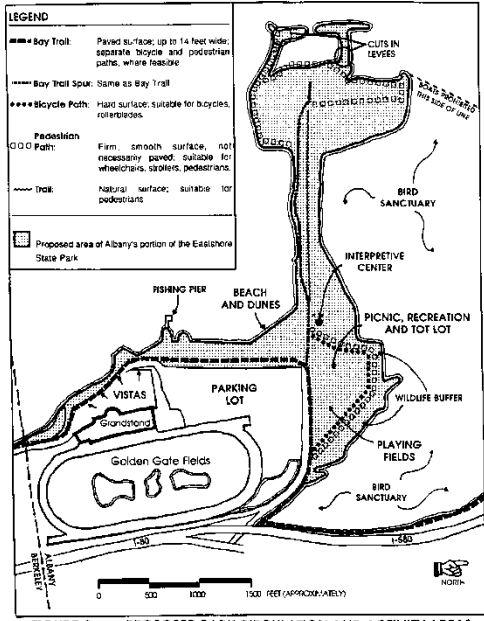
Transition Plan Approach

- Build on the policy direction established by the Eastshore State Park General Plan
- Update direction to respond to current regulatory and site contexts
- Perform technical analyses and assessments to inform planning and regulatory compliance
- Establish criteria and standards for transition
- Solicit key input from Technical Advisory Committee
- Explore remediation strategies that further recreation, conservation and interpretation objectives
- Work with community to shape and fine-tune the desired outcomes



Previous Planning Efforts

1995 City Objectives Submitted to EBRPD



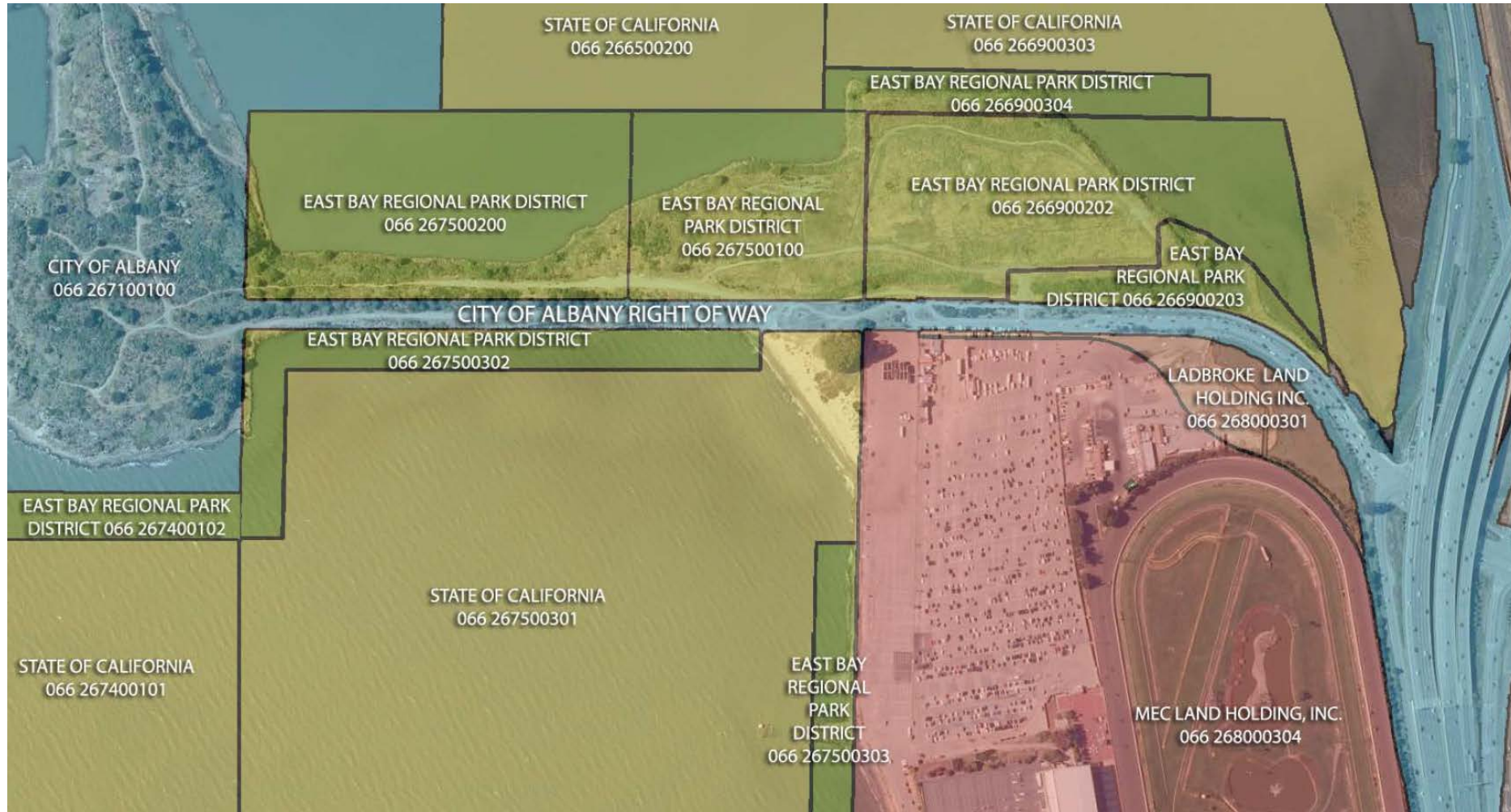
Eastshore State Park General Plan



Albany Beach Restoration Study



Property Ownership



Planning Phases

Existing Conditions

- Confirm sea level rise scenarios and projections to explore
- Review regulatory setting
- Background document review
- Regulatory framework review
- Sea level rise and shoreline vulnerability assessment
- Geotechnical assessment
- Hazardous materials assessment
- Habitat assessment

Conceptual Plan

- Hazard mitigation
- Habitat enhancement
- Recreation improvements

Draft Plan

- Improvement/management recommendations
- Cost estimates
- Phasing
- Operations & maintenance



Recreation & Human Access

- Opportunities & Constraints within Eastshore State Park policy framework
- Implications of sea level rise protection (both “hard” and “soft” measures)
- **Potential Recommendations**
 - Trail system and enhancements
 - Vista points
 - Enhanced water access
 - Natural and cultural resource interpretation
 - Public art



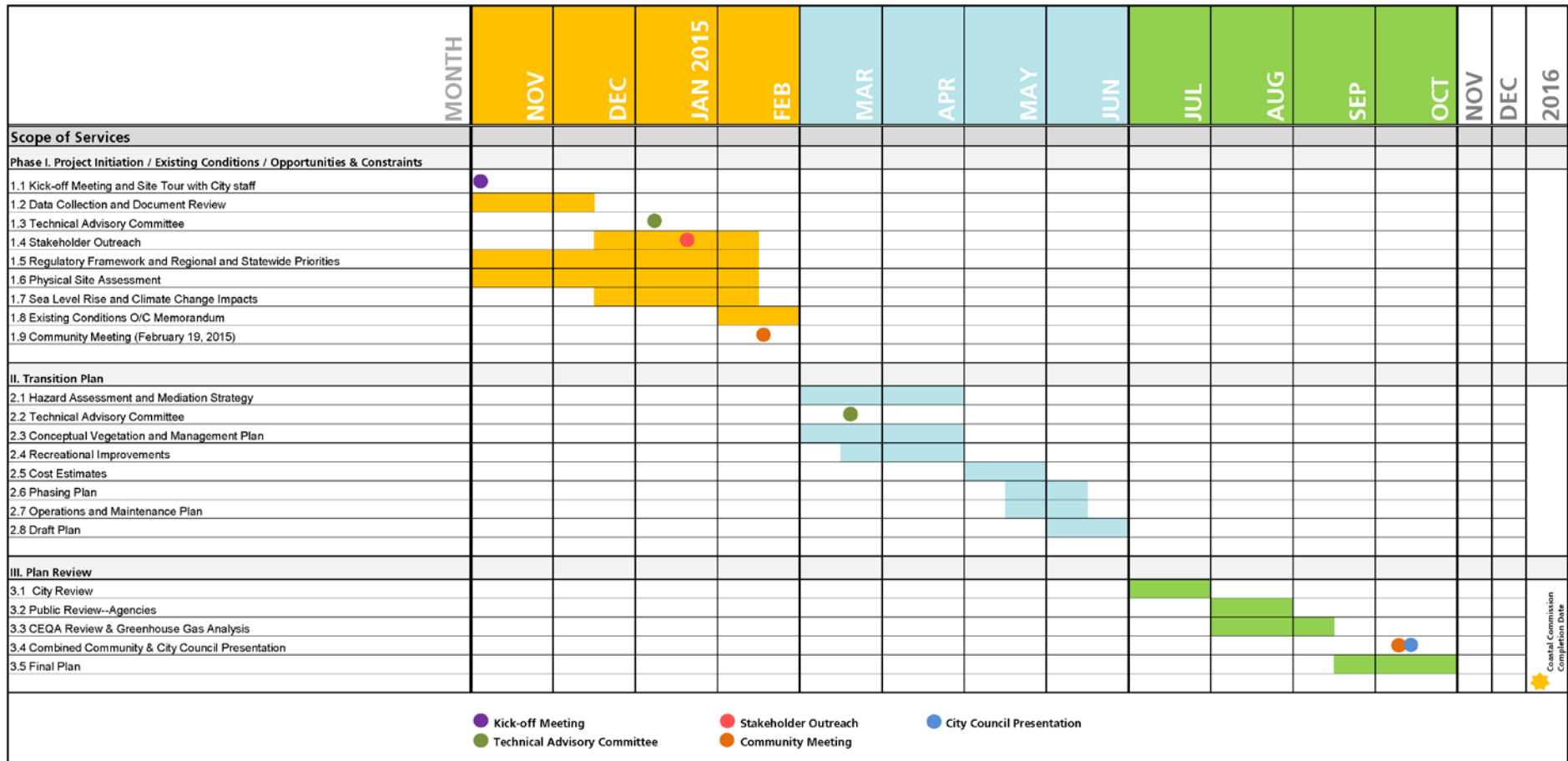
Selected Recreation & Access Policies

Eastshore State Park General Plan – Selected Albany Neck/Bulb Policies

- The designation of the Neck, Bulb, and Beach as conservation areas is intended to preserve this sense of naturalness and isolation.
- Generally **prohibit...vehicle access, other than for safety or maintenance personnel** beyond the roundabout on Buchanan Street.
- Provide **shoreline stairs and/or ramp** along the south side of the Neck and Bulb to **enhance water access**.
- **Create a vista point/seating area** on the bluff at the west end of the Bulb. The vista point/seating area could contain **interpretive exhibits....**
- Maintain a **comprehensive and integrated multi-use trail system** that provides access throughout the Albany area. As specific improvements are planned...**identify trails that need to be closed, improved, or created.**



Schedule



★ Coastal Commission Completion Date